



# Installation Guide

## Intelligent Signage: Display + Nuc Server

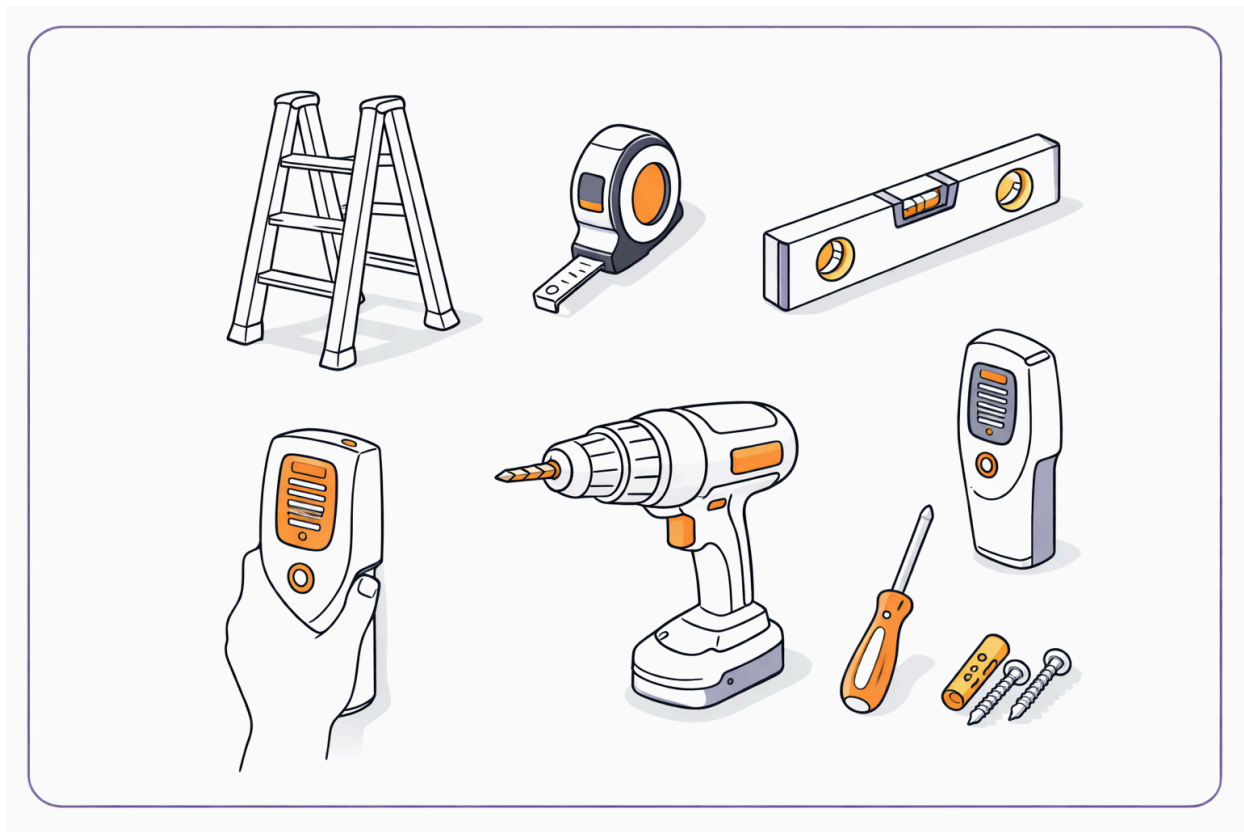
---

Quick Installation Guide: VXT Display + Asus Nuc server

Recommended: **2 people**

Time Required: 35 – 75 minutes

## A. Tools Needed



### TV + TV Mount

- Level
- Stud finder
- Screwdriver (Phillips)
- Handheld drill (with drill bit if mounting to a drywall)
- Drywall anchor screws
- Ladder
- Tape Measure
- Screws or nails for affixing mount to wall (x8)

### Nuc Server Mount

- Screwdriver (Phillips)
- Screws or nails for affixing mounting plate to wall (x2)
- Ladder

## Camera Mount

- Screwdriver (Phillips)
- Ladder
- Tape Measure

## B. Parts Included

### Main Hardware Components

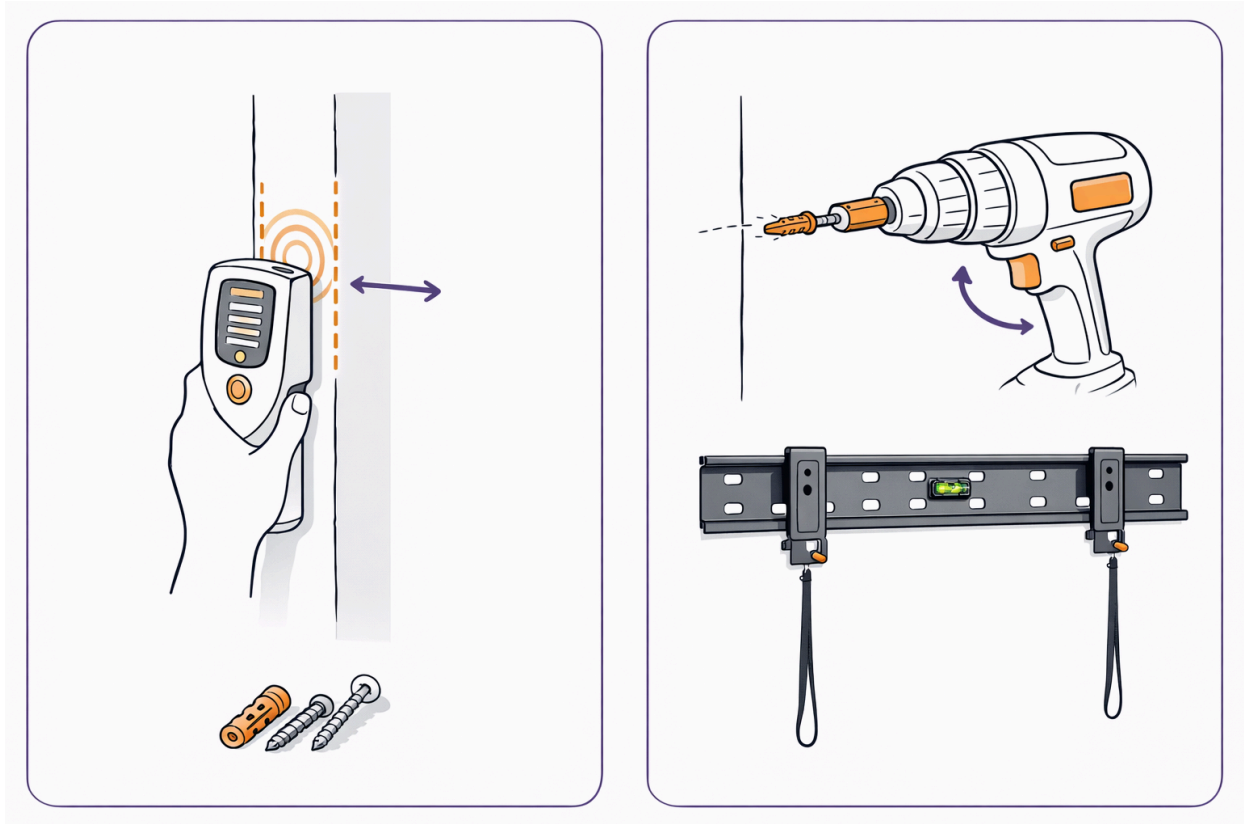
- Display
- Display Wall Mount
- Camera
- Camera Mount
- Asus Nuc

### From the NUC Box

- NUC Server
  - Mounting Plate
  - Power Cable (2 pieces)
  - 6 Mounting Screws (not all are required)
  - HDMI Cable (not required for install)
  - Mainframe Mounting Screw (not required for install)
  - Ethernet Cable (optional)
- 

## 1. Install Display Mount

 Two-person step recommended



1. Locate studs or install drywall anchors
2. Attach **display mount to wall or ceiling**
3. Use **level** to ensure mount is straight

---

## 2. Install Mount to Display

Attach display mount bracket to **back of TV** using provided mount hardware.

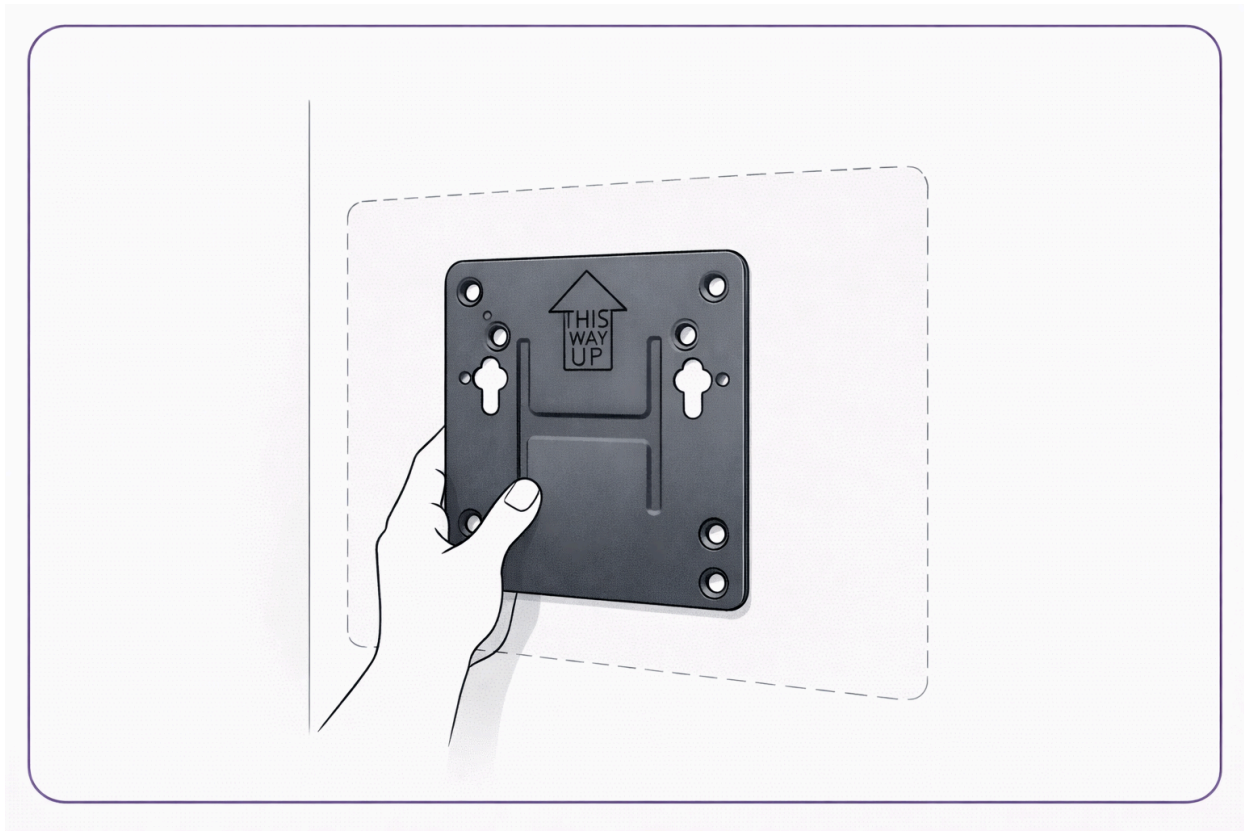
*Do not hang the display yet.*

---

### 3. Install NUC Mount Plate

Locate an area **behind the display that will not be visible** once the display is on the wall.

Recommended location: **upper left of TV**



1. Hold plate against wall
2. Ensure **UP** arrow points toward ceiling
3. Level plate
4. Secure to wall with screws (not included)

---

### 4. Prepare NUC Server

Flip NUC upside down.



1. Locate **two screw holes between the feet**.
  2. Insert **two mounting screws** into the NUC.
  3. These screws allow the NUC to **hook onto the wall plate**.
- 

## 5. Mount NUC

1. Hook NUC onto mounted plate
  2. Ensure it sits securely
- 

## 6. Connect Power

Assemble the **two-piece power cable**

Plug into:

Wall → NUC

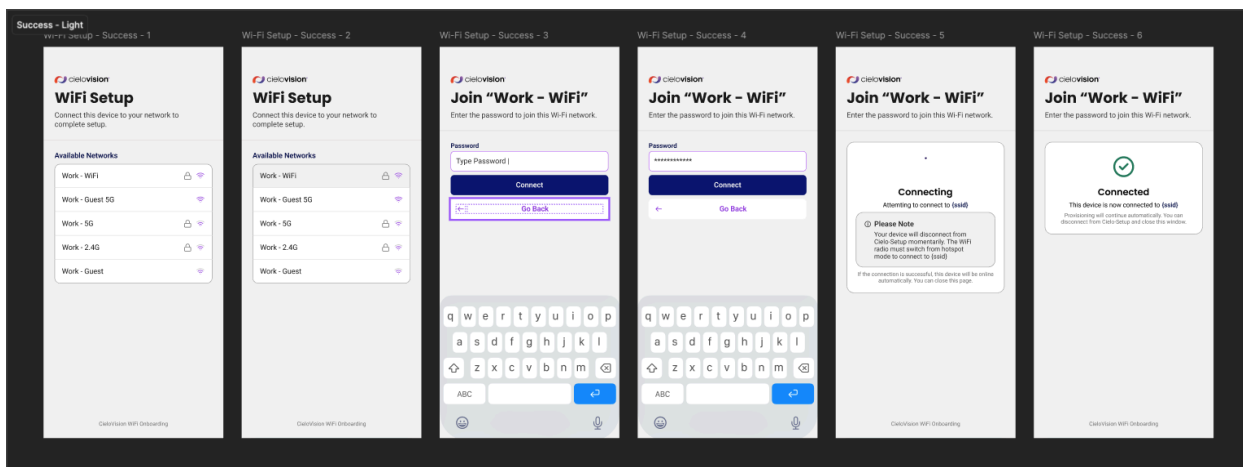
White light = device powered on.

---

## 7. Connect to WiFi

Using setup instructions, enter local **WiFi credentials** for the NUC.

*Device must connect before continuing.*



## 8. Connect Camera Cable

Plug **USB cable** into NUC

**Do not connect camera yet.**

---

## 9. Mount Display

With two people:

1. Connect TV to power
  2. Lift TV
  3. Hang TV onto wall mount
- 

## 10. Install Camera Mount to Camera

Attach camera mount to camera.

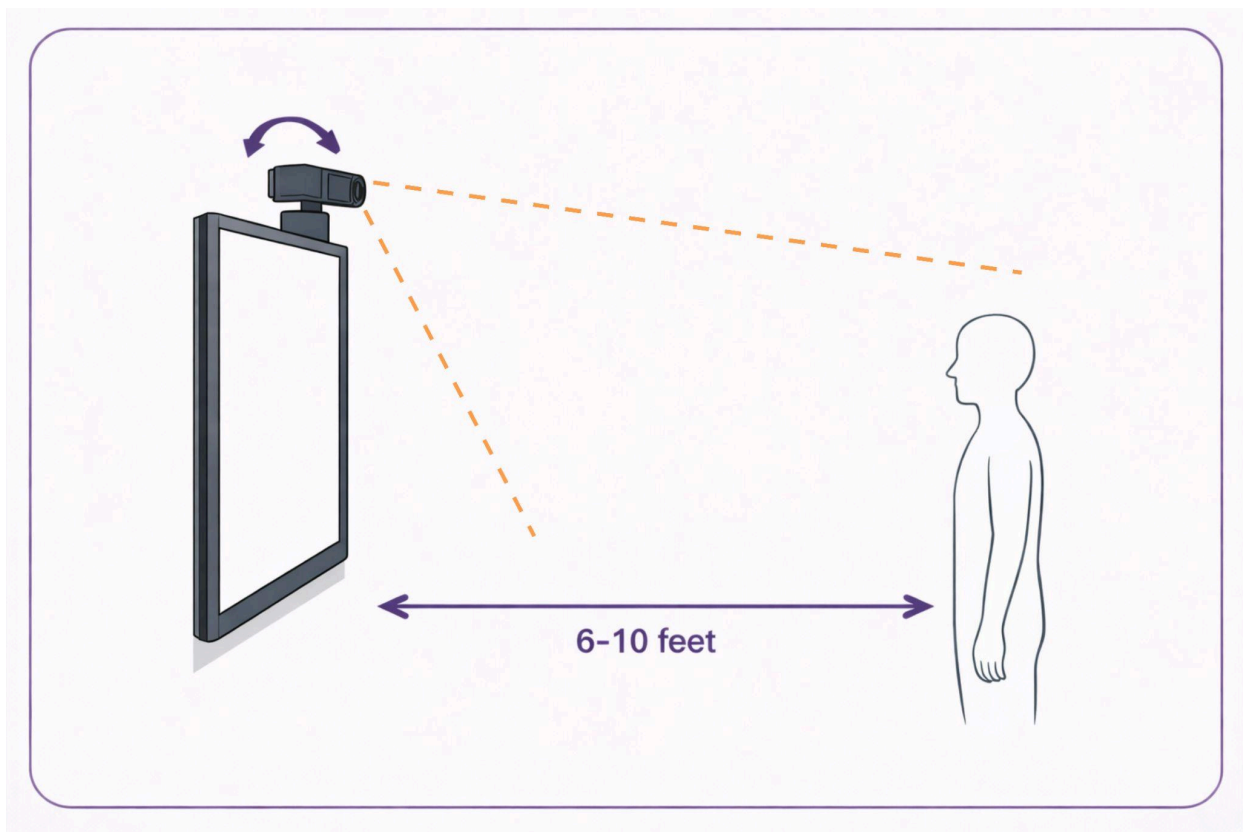
Use Phillips screwdriver to tighten.

---

## 11. Mount Camera to Display

1. Plug USB cable into camera
  2. Attach camera and camera mount to display
-

## 12. Adjust Camera Angle



Stand **6–10 feet** from display

Confirm that the camera lens has a clear view.

Adjust angle if needed.

Tighten side screws to lock position.

---

## 13. Confirm System

Check for **Cielo confirmation signal** to verify system is active.

Installation complete.

